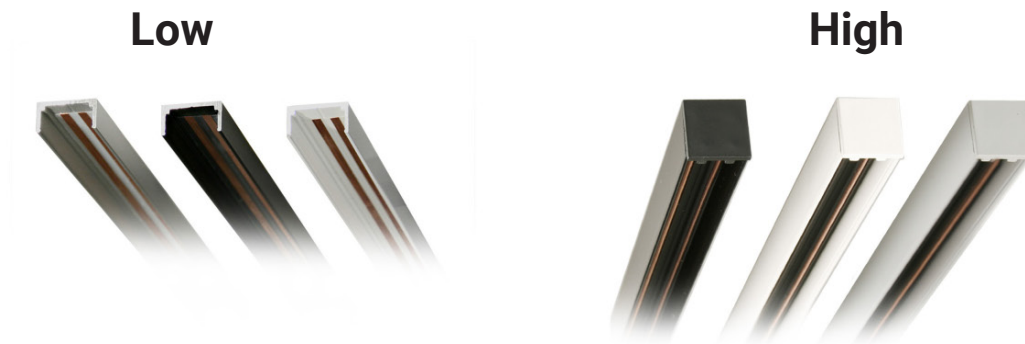


PICO TRAC

Miniature track systems



Pico Trac is one of the smallest lighting tracks in the world. It was originally made for use in museum display cases. When lighting was needed outside the cases, a new, slightly larger track was born - Pico Trac High.

The benefits

- Small physical size
- Seamless end results with included cover
- Local built-in dimmer on all Pico fixtures

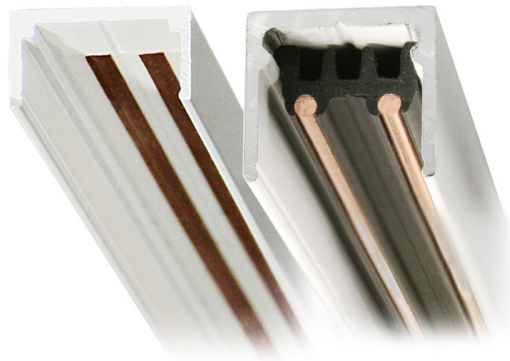


Compatible luminaires list

Article Number	Name	Power
GIM*-PT	Gimmick Pico Trac	2W
GIZ*-PT	Gizmo Pico Trac	3W
GIZZ*-PT	Gizmo Zoom Pico Trac	3W
DIN*-PT	Dinkey Pico Trac	4W
ARTPAR*B-PT	Arty PAR Pico Trac	4W
ARTPAR*C-PT	Arty PAR Pico Trac	8W
ARTPZ*C-PT	Arty Profile Pico Trac	8W
ARTZOOM*C-PT	Arty Zoom Pico Trac	8W

Pico Trac Specification

Material	Extruded aluminium Conductors made of copper
Finish	Grey (RAL 7040) Matte Black (RAL 9005) Matte White (RAL 9016)
Type	One circuit
Dimming	Track is NOT dimmable
Protection class	IP20
Operating voltage	12V DC
Length	200-3000 mm
Mounting	Fastening clip



LV Rating

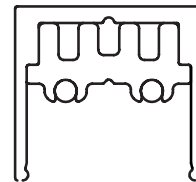
Pico Trac Low	12V DC Max 5A
Pico Trac High	12V DC Max 10A



Low



High



Cover



Accessories



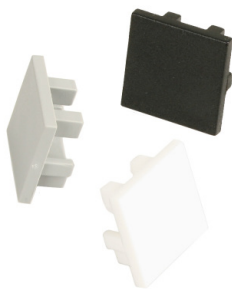
Power Feed



Straight Joiner
Joins two tracks



Pico Stick
Tool for removal
of Fixtures



End Cap High

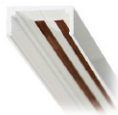


End Cap Low



Mounting Clips

TRACK SYSTEM PICO TRAC



PICO TRAC low

12V DC max 5A
Cover and clips included

<input type="checkbox"/>	PTL-1	Pico Trac Low 12V, Grey	10*17 mm, Max 3000 mm.
<input checked="" type="checkbox"/>	PTL-2	Pico Trac Low 12V, Black	10*17 mm, Max 3000 mm
<input type="checkbox"/>	PTL-3	Pico Trac Low 12V, White	10*17 mm, Max 3000 mm
<input checked="" type="checkbox"/>	PT-41-1	End Cap, Low, Grey	Adds 2 mm
<input checked="" type="checkbox"/>	PT-41-2	End Cap, Low, Black	Adds 2 mm
<input type="checkbox"/>	PT-41-3	End Cap, Low, White	Adds 2 mm



PICO TRAC high

12V DC max 10A
Cover and clips included

<input checked="" type="checkbox"/>	PTL-1	Pico Trac Low 12V, Grey	17*17 mm, Max 3000 mm
<input checked="" type="checkbox"/>	PTL-2	Pico Trac Low 12V, Black	17*17 mm, Max 3000 mm
<input type="checkbox"/>	PTL-3	Pico Trac Low 12V, White	17*17 mm, Max 3000 mm
<input checked="" type="checkbox"/>	GIZ-A512B-1	End Cap, High, Grey	Adds 2 mm
<input checked="" type="checkbox"/>	GIZ-A512B-2	End Cap, High, Black	Adds 2 mm
<input type="checkbox"/>	GIZ-A512B-3	End Cap, High, White	Adds 2 mm

PICO TRAC accessories

<input checked="" type="checkbox"/>	PT-11-1	Pico Trac Power Feed, Grey	12V DC, max 10A	50 mm
<input checked="" type="checkbox"/>	PT-11-2	Pico Trac Power Feed, Black	12V DC, max 10A	50 mm
<input type="checkbox"/>	PT-11-3	Pico Trac Power Feed, White	12V DC, max 10A	50 mm
	PT-11	Pico Trac Power Feed, PCB	PCB only	38 mm
<input checked="" type="checkbox"/>	PT-14-1	PicoTrac Straight Joiner, Grey	12V DC, max 10A	100 mm
<input checked="" type="checkbox"/>	PT-14-2	PicoTrac Straight Joiner, Black	12V DC, max 10A	100 mm
<input type="checkbox"/>	PT-14-3	PicoTrac Straight Joiner, White	12V DC, max 10A	100 mm
<input checked="" type="checkbox"/>	LFL-12-1	Extra Mounting Clips, Pico Trac Low, Grey	Screw included	
<input checked="" type="checkbox"/>	LFL-12-2	Extra Mounting Clips, Pico Trac Low, Black	Screw included	
<input type="checkbox"/>	LFL-12-3	Extra Mounting Clips, Pico Trac Low, White	Screw included	
<input checked="" type="checkbox"/>	LFH-12-1	Extra Mounting Clips, Pico Trac High, Grey	Screw included	
<input checked="" type="checkbox"/>	LFH-12-2	Extra Mounting Clips, Pico Trac High, Black	Screw included	
<input type="checkbox"/>	LFH-12-3	Extra Mounting Clips, Pico Trac High, White	Screw included	
	PT-STICK	Pico Stick, Tool for easy removal of fixtures		

POWER SUPPLY FOR PICO TRAC

Short-circuit and over temperature protected

SNP15-12VL	Power Supply, 12V 15W, 1,25A	123 x 44 x 20 mm (LxWxH)
SNP30-12VF	Power Supply, 12V 30W, 2,5A	160 x 58 x 18 mm (LxWxH)
SNP75-12VL-E	Power Supply, 12V 70W, 5,83A	170 x 45 x 29 mm (LxWxH)
SNP100-12VL	Power Supply, 12V 100W, 8,3A	180 x 59 x 32 mm (LxWxH)
SNP150-12VL	Power Supply, 12V 132W, 11,0A	180 x 59 x 32 mm (LxWxH)
SKX-2	Power Cord 2x0,75, Black	2m, Europlug
SKX-3	Power Cord 2x0,75, White	2m, Europlug

CONNECTION CABLES FOR PICO TRAC

H03VV-F-2	Cable SKK, Round, Black	2x0,75
H03VV-F-3	Cable SKK, Round, White	2x0,75
SKX075-2	Cable SKX, Oval, Black	2x0,75
SKX075-3	Cable SKX, Oval, White	2x0,75
EP065-1	Elcuflex FM, Grey	2x0,65
EP065-2	Elcuflex FM, Black	2x0,65